

Designed for Windows Operating System

# **Ivanti Secure Access Client - Windows Installation & User Guide**

**Tunghai University SSLVPN  
Complete Connection Tutorial**

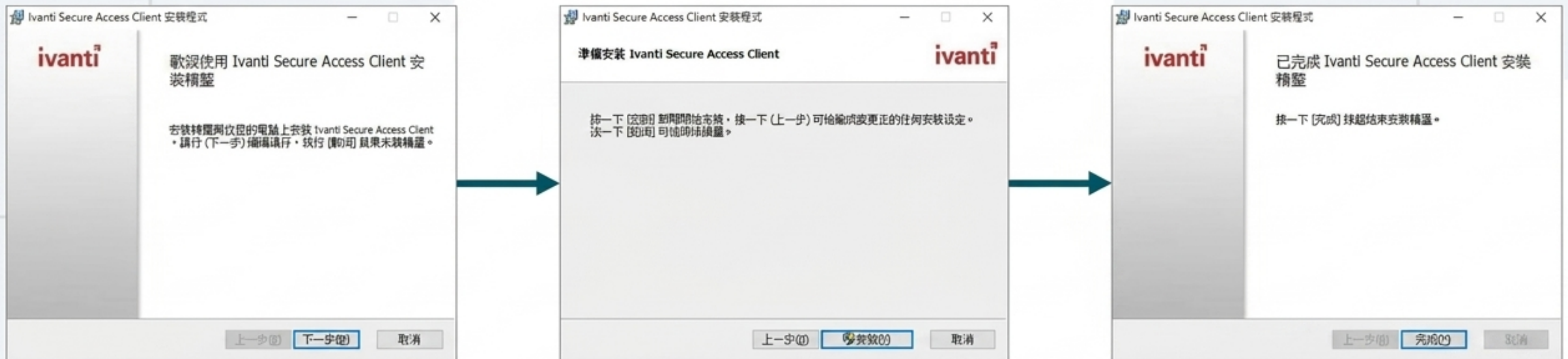


# Phase 1: Download & Installation

## Install Ivanti Secure Access Client

Download Ivanti-Windows\_64-bit.msi from this site

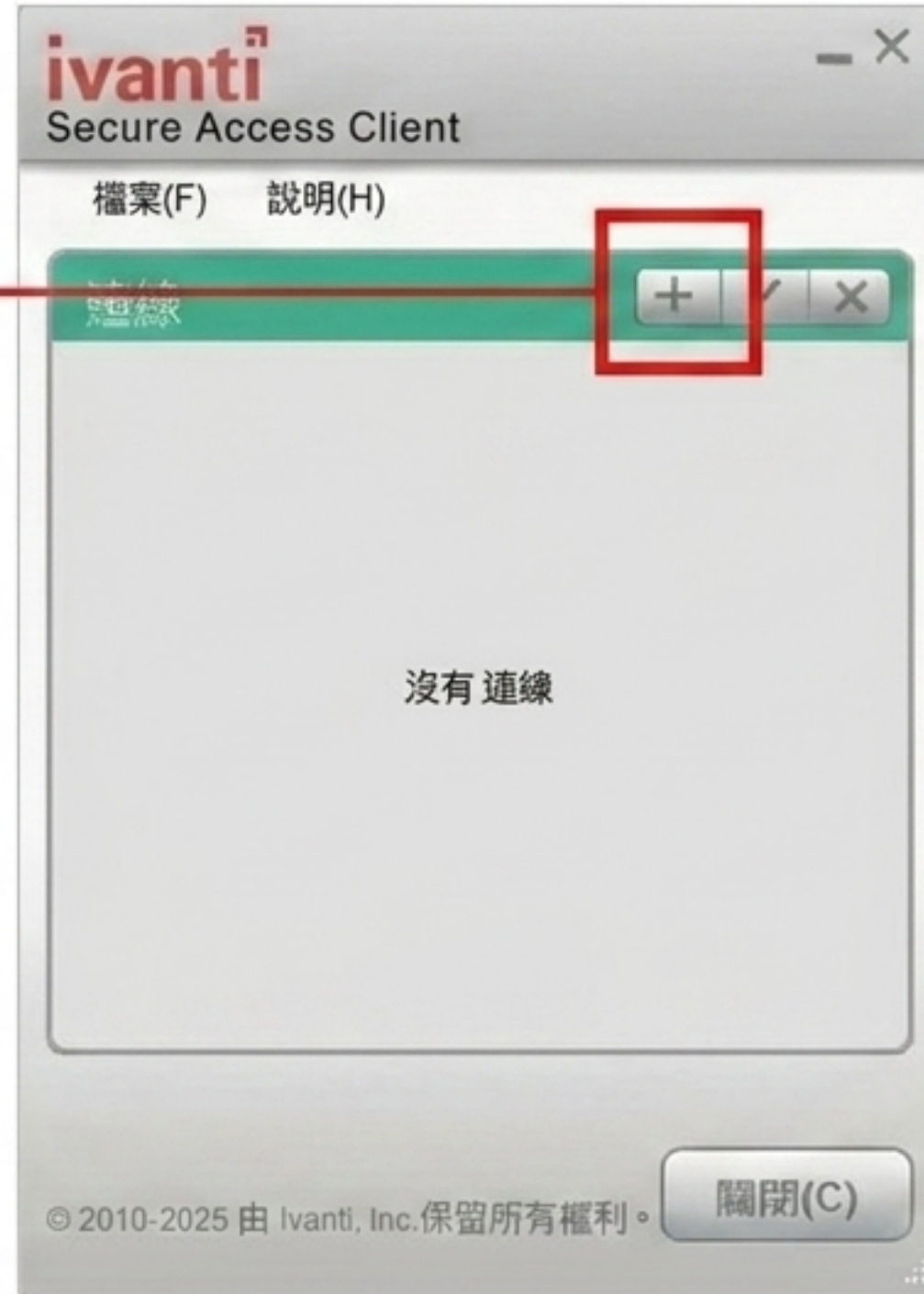
1. Locate the Ivanti Secure Access Client file and complete the installation.



# Phase 2: Configuration

## 2. First-time Use

Launch the software and click the "+" icon to add a new connection.



# Phase 2: Configuration

## Start Configuration

a. Enter a connection name  
(you can name this connection  
whatever you prefer).

b. Please enter the Tunghai  
SSLVPN URL:  
<https://thuvpn.twaren.net>

新增連線

類型(I):  
Policy Secure (UAC) 或 Connect Secure (VPN)

名稱(M):

伺服器 URL(S):

連線(C) 新增(A) 取消(N)

# Phase 3: Usage

## 3. Start Using

- a** Enter your full Tunghai e-mail address
- b** Enter your password
- c** Click “Connect”

ivanti  
Secure Access Client

連線至: thu-sslvpn

使用番名額(U): **a**  
your\_ID@thu.edu.tw

密碼(P): **b**  
.....

儲存設定(S)

**c**  
連線(C) 取消(A)

# Phase 3: Usage

d. The status “Connected” indicates that the SSLVPN is functioning normally.



e. When finished, simply click “Disconnect”.

# Setup Complete

Your Windows computer has successfully configured the Tunghai University SSLVPN. For future connections, simply open the Ivanti Secure Access Client, click connect, and enter your credentials. No need to reconfigure the server.

## One-time Setup



## Daily Use

